

ASPEN  SNOWMASS®

2014 —  
2015

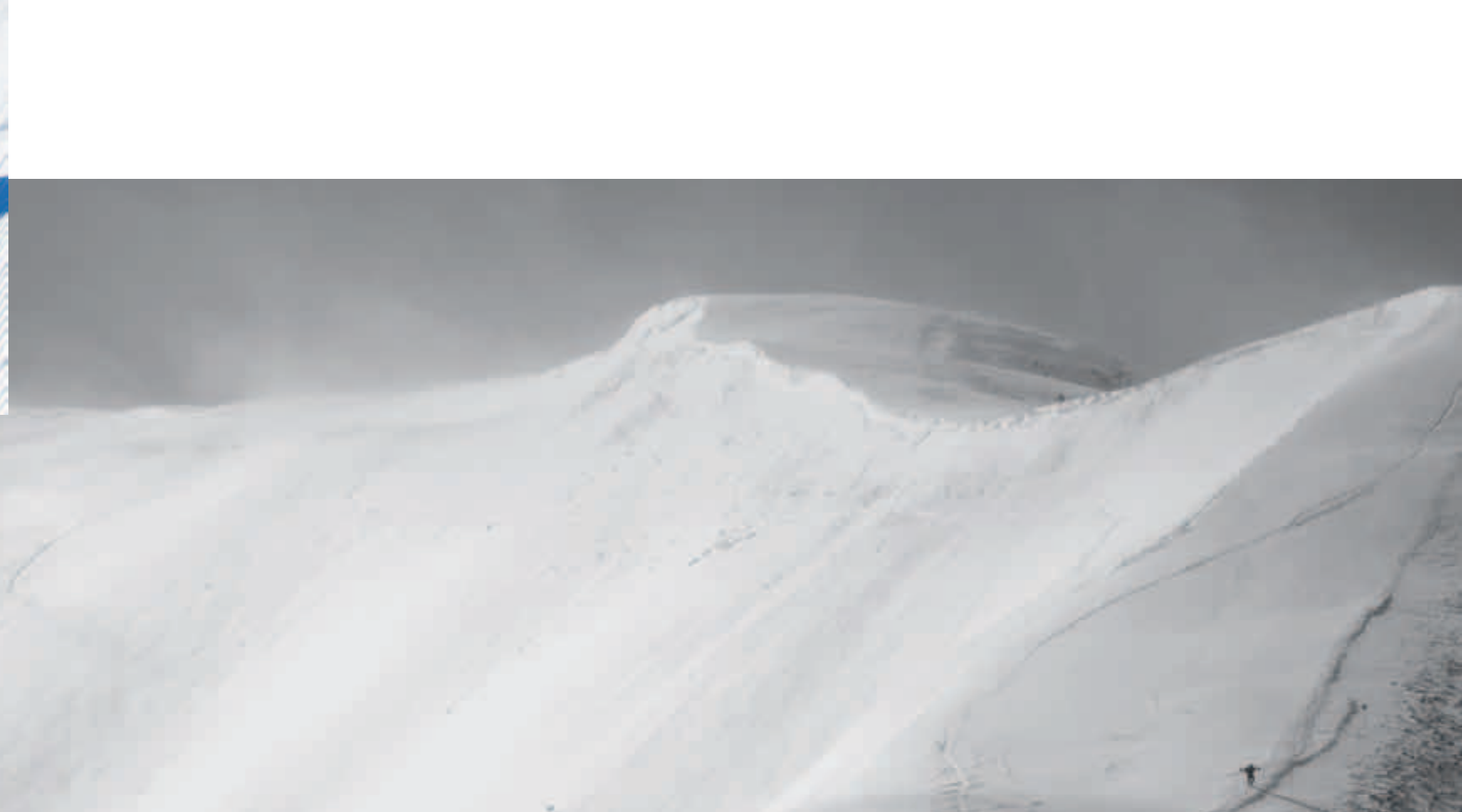




KNEE-DEEP POWDER ON  
ASPEN MOUNTAIN.

---

A TOP-TO-BOTTOM  
GROOMER WITH ENDLESS  
VIEWS AT SNOWMASS.



PROGRESSIVE TERRAIN PARKS  
AT BUTTERMILK.

---

WIDE OPEN STEEPS OF  
HIGHLAND BOWL.

Some resorts are famous for their terrain. Aspen Snowmass is famous for how our terrain makes you feel. It is a state of bliss that you can't simply package up and replicate.

In a way, our four mountains of unique terrain are just the beginning. When you come to Aspen Snowmass in winter, there's no telling what your vacation highlight will be. It may well be the sublime skiing and riding. Or it could be the world famous après ski, a mountain town with the arts and culture scene of a major city, or the fabulous dining at any of our on-mountain restaurants.

And since we keep adding new features to the resort every year — like The Hideout, the new children's center at Buttermilk — or the four new tubing lanes at Snowmass — Aspen Snowmass continues to evolve and stay ahead of the curve.

## ASPEN HIGHLANDS

DEC. 13, 2014 - APR. 12, 2015

3 miles (4.7 km) to Aspen, 8 miles (13.4 km) to Snowmass

**TRAIL MAP:** Pg. 23



CITY OF ASPEN

## ASPEN MOUNTAIN

NOV. 27, 2014 - APR. 19, 2015

9 miles (14.4 km) to Snowmass

**TRAIL MAP:** Pg. 20

## SNOWMASS

NOV. 27, 2014 - APR. 12, 2015

9 miles (14.4 km) to Aspen

**TRAIL MAP:** Pg. 18

SNOWMASS VILLAGE



## BUTTERMILK

DEC. 13, 2014 - APR. 5, 2015

2.5 miles (4 km) to Aspen, 8.7 miles (14 km) to Snowmass

**TRAIL MAP:** Pg. 24

ASPEN/PITKIN COUNTY AIRPORT

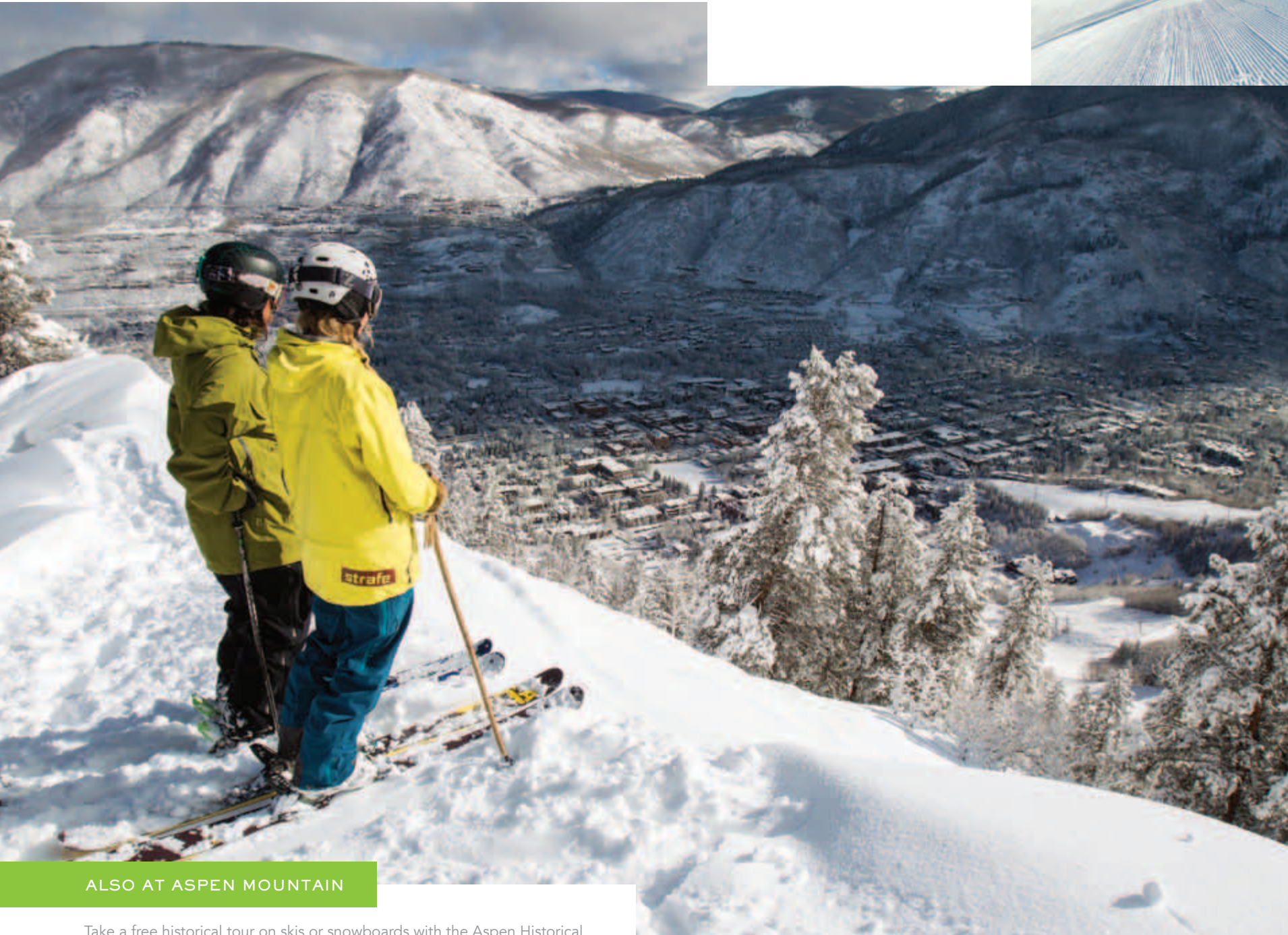
3 miles (4.8 km) to Aspen

6 miles (9.6 km) to Snowmass Village

**AIRPORT INFORMATION:** Pg. 14 & 15

## ASPEN MOUNTAIN & THE CITY OF ASPEN

There is no denying the unique personality of Aspen Mountain. Rising from the vibrant heart of downtown Aspen, this is where it all began nearly 70 years ago. While services and trails have been added over that time, the spirit of those early days persists. You may be skiing down the same runs that have held World Cup races, or exploring powder stashes through wooded glades, but you'll still feel like you're skiing the local's mountain. Up top, the Sundeck serves delectable dishes with an unparalleled view, while down at the base, Ajax Tavern has become internationally known for its après ski scene and truffle fries.



### ALSO AT ASPEN MOUNTAIN

Take a free historical tour on skis or snowboards with the Aspen Historical Society, and discover the compelling stories of fortunes won and lost on the slopes of Aspen Mountain.





## ALSO AT SNOWMASS

Take a break from skiing and riding and head to the new tubing runs at Elk Camp. Opening in 2014-2015, the tubing center will include four lift-served lanes of tubing excitement.

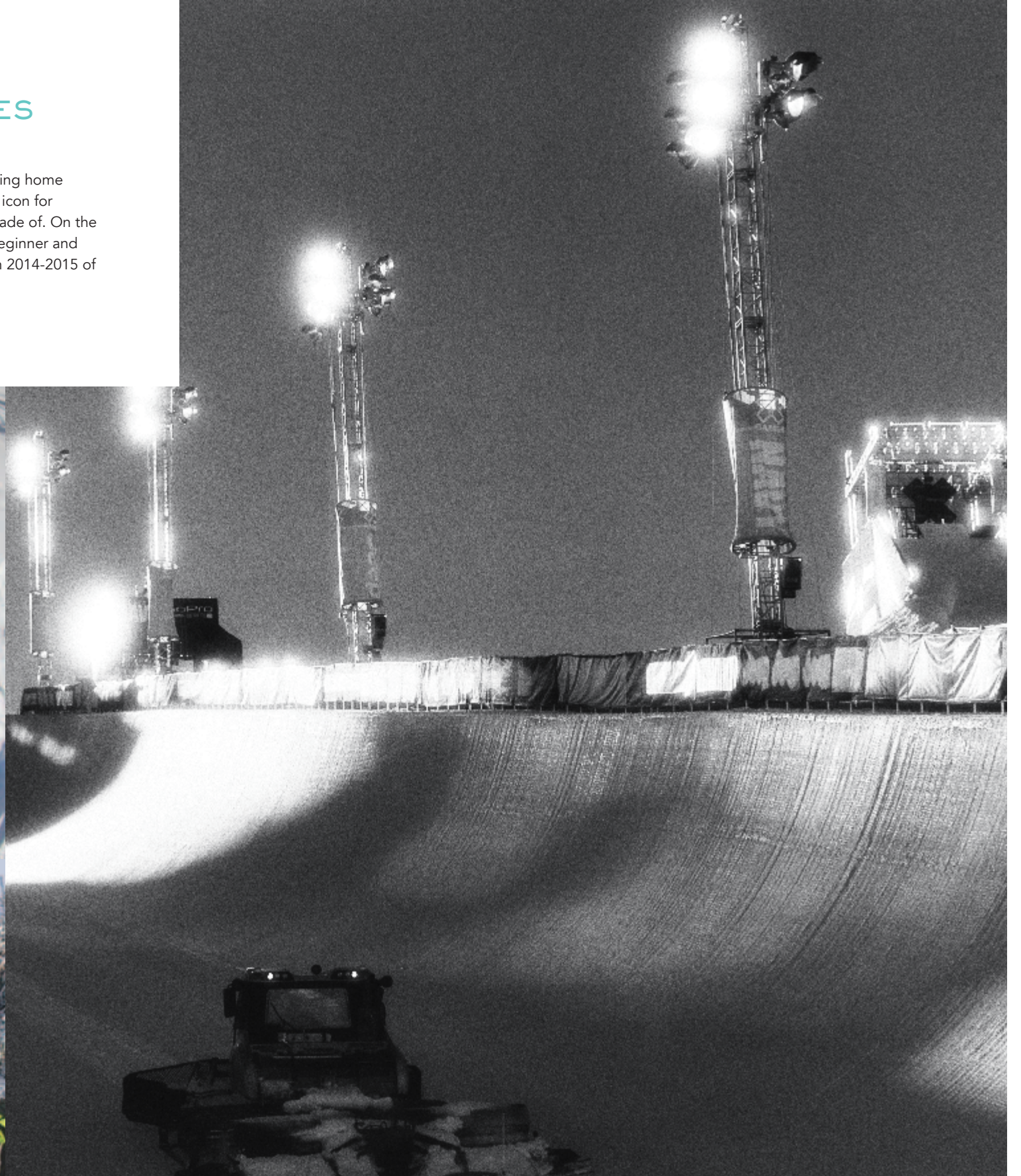


## SNOWMASS & SNOWMASS VILLAGE

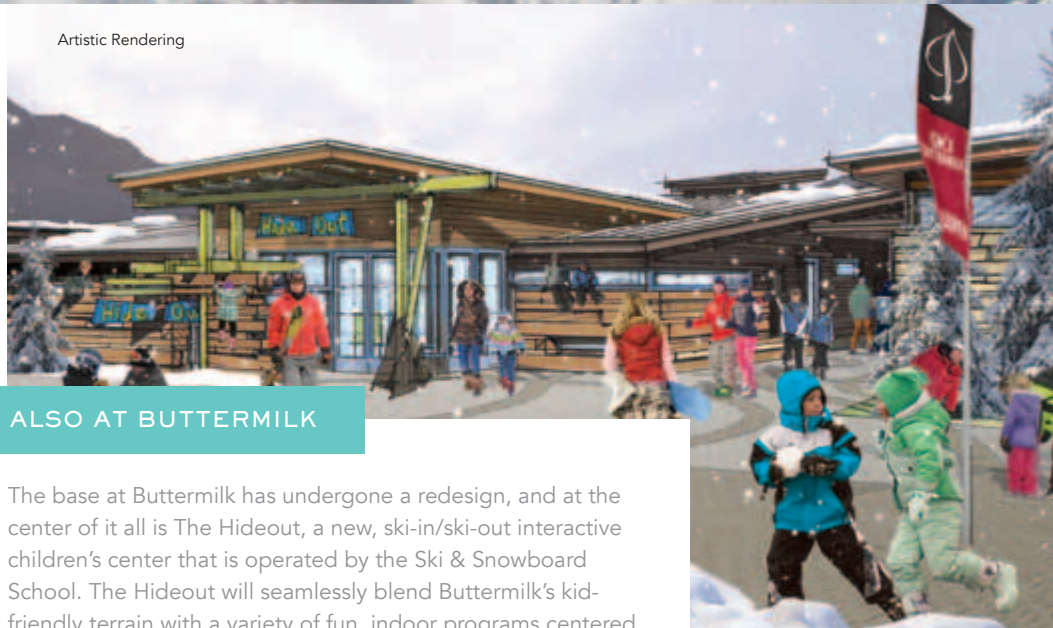
Snowmass couldn't have a more appropriate name. With 94 trails and an astonishing 4,400 feet (1,343 meters) of vertical from base to summit, secret stashes abound. You could spend your entire trip skiing and riding here without covering the same ground twice. But Snowmass is more than just awesome terrain. The Treehouse Kids' Adventure Center continues to delight families with its excellent, kid-centric programming and ski school. Mix that with the weekly bonfire and s'mores party known as Ullr Nights at Elk Camp, as well as abundant ski-in/ski-out lodging options, and Snowmass emerges as an ideal base for any winter vacation.

## BUTTERMILK: HOME OF THE X GAMES AND THE HIDEOUT

Buttermilk is one mountain with two personalities. Best known around the world for being home to the Winter X Games (for a 14th year in a row in 2015), the mountain has become an icon for freestyle riders and skiers, who hit up the Buttermilk park & pipe to see what they're made of. On the flipside, Buttermilk is also easy-going for beginners and families. It boasts wonderful beginner and intermediate terrain, as well as fun trails geared especially for kids. With the addition in 2014-2015 of The Hideout, Buttermilk offers the complete skiing experience for families, too.



Artistic Rendering



### ALSO AT BUTTERMILK

The base at Buttermilk has undergone a redesign, and at the center of it all is The Hideout, a new, ski-in/ski-out interactive children's center that is operated by the Ski & Snowboard School. The Hideout will seamlessly blend Buttermilk's kid-friendly terrain with a variety of fun, indoor programs centered on mountain adventure.



January 22-25, 2015  
Home of the X Games  
for the next 5 years.

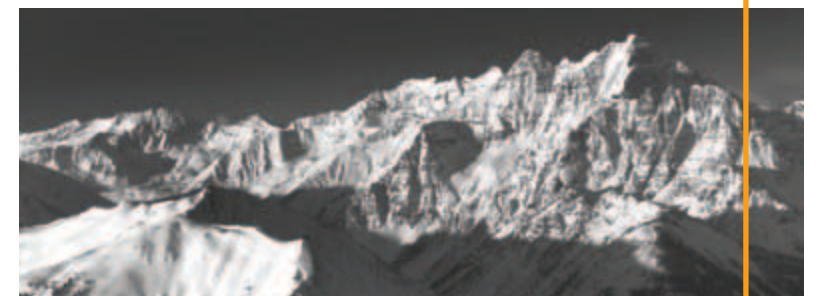
## ALSO AT ASPEN HIGHLANDS

Break bread with friends over a pot of fondue at the iconic Cloud Nine Alpine Bistro, a restaurant that proudly has one foot in Colorado and another in Switzerland.



## ASPEN HIGHLANDS

Aspen Highlands may be only one ridge over from Aspen Mountain and Buttermilk, but it is truly in a world all its own. Adored by locals and revered by elite skiers and riders, Aspen Highlands has a duct-tape-to-diamonds vibe that is totally unique. Hike the ridge to Highland Bowl for the sweetest run of your life, or dash through glades on the edge of Olympic Bowl. Or simply cruise along the mid-mountain groomers off the Cloud Nine chairlift. After each run, a glance over the valley at the snow-covered Maroon Bells will remind you why they are the most recognizable peaks in Colorado.







## SKI & SNOWBOARD RENTALS

Four Mountain Sports offers a huge selection of the latest ski and snowboard equipment. More than just ski and snowboard rentals, each of our nine locations carry the latest in outerwear and lifestyle clothing for on- and off-mountain fashions, including Aspen Snowmass merchandise, shoes, accessories and much more.

### 10 REASONS TO RENT GEAR WITH FOUR MOUNTAIN SPORTS

- 01 **Convenient Locations** – Four Mountain Sports is the most convenient place to rent gear with nine rental locations across the entire resort.
- 02 **Easy to Swap** – If your gear doesn't feel right, or needs to better fit the conditions, just swing by any of our nine locations and we'll let you exchange it for something better.
- 03 **Store and Transfer** – Only Four Mountain Sports offers free storage and transfer at all four mountains.
- 04 **Everything in One Spot** – Purchase Ski & Snowboard School lessons and lift tickets where you rent.
- 05 **The Antidote to Excessive Airline Fees** – With all of these reasons in mind, why pay airline fees to bring your own skis and snowboard gear?
- 06 **Best Selection** – Choose from the largest selection of skis, snowboards and related gear in the Aspen Snowmass area.
- 07 **The Perfect Tune** – All of our skiing and snowboarding gear is masterfully tuned for each rental. You'll be skiing and riding on only top-performing gear.
- 08 **The Best Gear** – Our equipment is not only top-of-the-line, but uniquely Aspen with custom designs.
- 09 **Look good** – Enjoy a large selection of outdoor gear and retail — all in the same spot where you rent.
- 10 **20% Savings** – Book in advance and save up to 20% off the walk-in rate.



### 9 CONVENIENT LOCATIONS

With stores at all four mountains, Four Mountain Sports offers nine convenient rental locations.

**Aspen**, 520 E. Durant Ave., 8 am – 9 pm

**Snowmass Village Mall**, 8 am – 9 pm

**Aspen Highlands**, 8 am – 5 pm

**Buttermilk**, 8 am – 5 pm

**Two Creeks, Snowmass**, 8 am – 5 pm

**Snowmass Base Village**, 8 am – 5 pm

**Beginner's Magic™ at Elk Camp, Snowmass**, 9 am – 3:30 pm

**Viceroy, Snowmass**, 8 am – 7 pm

**Sky Hotel**, 8 am – 7 pm



### D&E: SO MUCH RETAIL!

Located within the Snowmass Mall and Aspen Four Mountain Sports locations, D&E can supply you with everything you need for your on- and off-mountain fun and adventures. Stop by and check out a huge selection from brands by Burton, Volcom, Diesel, Billabong, Smith, Oakley and more.

#### KIDS' GEAR

Get your kids set up for a day on the slopes at Four Mountain Kids!

#### RENT EARLY AND SAVE

Don't wait until you get here! Avoid the lines, purchase in advance and **SAVE UP TO 20%!** To book call **1-970-923-1227** or contact your preferred tour operator.





## SKI & SNOWBOARD SCHOOL



### INSTRUCTOR. GUIDE. LOCAL. FRIEND.

Aspen Snowmass' Ski & Snowboard School is comprised of more than 1,200 professionals fluent in 10 languages. Guests from around the world come back to Aspen Snowmass largely because of the quality of our Pros. Each one is highly trained in their discipline, and capable of improving your technique, building your confidence, and showing you the best terrain on each mountain. In fact, many guests report that their Pro is more like a local friend who not only skis or rides with them during the day but will recommend the best local restaurants, shops and nighttime activities.

#### WHY ARE WE THE BEST?

Pros who teach with the Ski & Snowboard Schools of Aspen Snowmass are the best in the world. The School's training department provides over 30,000 hours of training each season keeping our Pros on top of the most contemporary ski and snowboard techniques and teaching methods.

#### OUR 100% GUARANTEE!

All lessons are fully refundable. We're so confident your time with one of our talented Pros will prove worthwhile that every program is 100% guaranteed! If a lesson is not used, or if you're not completely satisfied, we'll happily enroll you in a new lesson or provide a full refund.



Artistic Rendering  
**NEW!**

#### THE HIDEOUT

During the 2014-15 winter season, Aspen Snowmass will further elevate what a children's program can be with the addition of The Hideout at the base of Buttermilk. Using mountain adventure as its foundation, this innovative new center will foster every child's imagination.

The 7,500-square-foot-facility will offer a fresh new approach to kids programming by seamlessly mixing indoor play with ski instruction. When paired with Buttermilk's famous kid-friendly trails and terrain, Aspen Snowmass will continue to set the standard for kid-friendly resort programs.



FOR MORE INFORMATION

To purchase lessons or pricing, contact your preferred tour operator or visit [www.aspensnowmass.com](http://www.aspensnowmass.com).

#### PRIVATE LESSONS

Create your perfect day. We have Pros across all four mountains dedicated to giving you the most amazing experience possible. No matter your age or ability level, we can custom-tailor the appropriate instruction for you, whether you've never set foot on snow before or if you are an expert and just want a couple of pointers. Private lessons can have up to five participants, so you can form your own fun group.

**7-day advance Full Day \$680** / Window \$730  
**7-day advance Half Day \$510** / Window \$560

#### ADULT BEGINNER'S MAGIC™: SKIING & SNOWBOARDING

##### Beginners at Snowmass and Buttermilk

Specifically designed to meet the needs of beginner-level skiers and snowboarders, Beginner's Magic utilizes a teaching method that promotes peak performance, confidence and mountain awareness. Lesson, lift and rentals included!

**7-day Advance \$209** / Window \$219  
Extension rate (maximum 2 days) \$149

#### ADULT GROUP LESSONS: SKIING & SNOWBOARDING

##### Intermediate to Expert at Snowmass and Buttermilk

Take your skiing or riding to the next level. Learn more in a group of similarly skilled skiers or riders as you polish your turns and master the bumps, steeps, park & pipe and powder.

**7-day Advance \$143** / Window \$153

#### ADULT PERFORMANCE COACHING: SKIING

##### Advanced Intermediate to Expert at Aspen Mountain and Aspen Highlands

Join the world's best ski Pros for a full day of coaching on tactics, terrain and performance skiing. Our Pros will group no more than three skiers of similar ability levels per group. Performance coaching is available daily.

**7-day Advance \$224** / Window \$244

#### TEEN GROUP LESSONS (AGES 13-17): SKIING & SNOWBOARDING

##### All Levels at Snowmass

Our teen programs, offered daily throughout the season, are taught by our most fun-loving and qualified Pros. Teens explore the mountain, learn and get feedback on tricks, ride the park & pipe and enjoy fun competitions.

**7-day Advance \$114** / Window \$124

#### CHILDREN'S GROUP LESSONS (AGES 7-12): SKIING & SNOWBOARDING

##### All Levels at Snowmass and Buttermilk Intermediate to Expert Skiers Only at Aspen Highlands

Experienced Pros share their wealth of knowledge and instill an appreciation for the mountain environment. Their passion is contagious and children enjoy perfecting their skills while they develop a love for the sport. Full day includes lunch.

**7-day Advance \$114** / Window \$124

#### CHILDREN'S GROUP LESSONS (AGES 2.5 - 6): SKIING

Children explore all the coolest trails and adventure zones and practice jibbing skills in the park & pipe – all while making friends and learning to ski and ride in a fun environment. Classes are divided according to age and ability. Full day includes equipment rental and lunch.

**7-day Advance \$199** / Window \$209

#### CHILDCARE

Aspen Snowmass is a wonderland for children. The Treehouse Kids' Adventure Center, a multilevel, 2,300-square-meter childcare facility in Snowmass Village, brings the great outdoors inside with Colorado-themed play rooms and supervised activities for children ages 8 weeks to 4 years old. Reservations are required.

**7-day Advance \$159** / Window \$169

## GETTING HERE AND BACK

### ASPEN/PITKIN COUNTY AIRPORT (ASE)

You've just landed five minutes from the slopes! Aspen Snowmass is one of the most accessible Rocky Mountain resorts, with hundreds of nonstop and connecting flights weekly. North America's only slopeside airport, Aspen/Pitkin County Airport (ASE) is located just 3 miles (4.8 km) from Aspen and 6 miles (9.6 km) from Snowmass Village. Service with United Airlines, American Airlines and Delta. Air service subject to change.



#### Nonstop service to Aspen:

- Denver, CO:** Up to 12 flights daily, connections from 100+ cities coast-to-coast
- Chicago/O'Hare, IL:** Up to 5 flights daily
- Houston/Bush, TX:** Up to 3 flights daily
- Dallas/Ft. Worth, TX:** 2 flights daily
- San Francisco, CA:** Up to 2 flights daily
- Los Angeles, CA:** Up to 5 flights daily
- Atlanta, GA:** 1 flight daily
- Minneapolis, MN:** 1 flight weekly

### Aspen/Pitkin County Airport



### COMPLIMENTARY AIRPORT TRANSFER

Many lodges provide complimentary transfers to and from the Aspen Airport. There is also a taxi and Colorado Mountain Express (CME) service available at the airport and throughout Aspen Snowmass. The CME counter is located in the baggage claim area at Aspen Airport to accommodate guest transfers.

### FREE SKIER SHUTTLE

Local transportation is comprehensive and convenient. Free shuttle buses run continuously between all four mountains until 2 am.

### Eagle County Airport

### ADDITIONAL AIRPORTS TO CONSIDER:

#### EAGLE COUNTY AIRPORT (EGE)

An easy drive away, Eagle County Airport is located 70 miles (113 km) from Aspen Snowmass. Served by three airlines with nonstop flights from 11 cities during the winter, and one-stop connections from cities throughout the world. All schedules are subject to change.

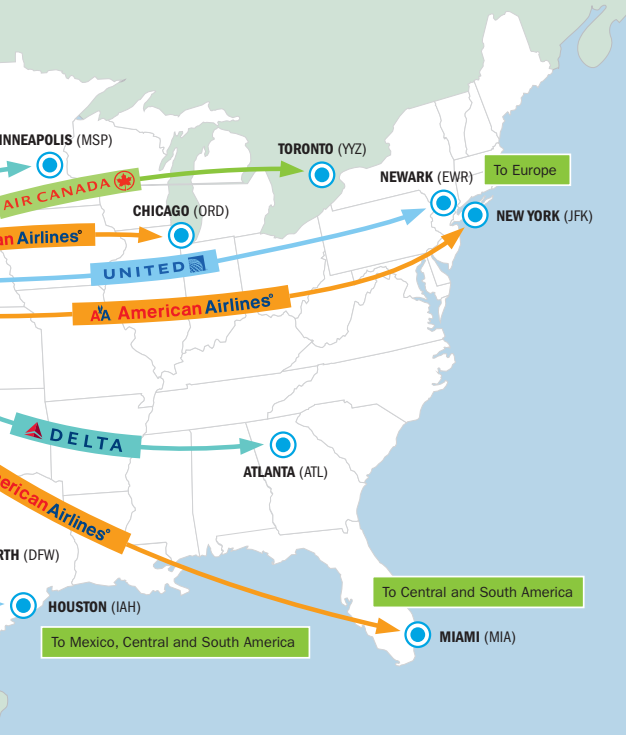


#### Nonstop service to Eagle:

- Denver, CO:** 4 flights daily
- Houston, TX:** 1 flight daily
- Newark, NJ:** 1 flight daily
- Dallas/Ft. Worth, TX:** 2-4 flights daily
- Chicago/O'Hare, IL:** 1-2 flights daily
- New York/JFK, NY:** 1 flight daily
- Miami, FL:** 1 flight daily
- Atlanta, GA:** 1 flight daily
- Minneapolis, MN:** 1 flight weekly
- Los Angeles, CA:** 1 flight daily
- Toronto, Canada:** 1 flight weekly

#### DENVER INTERNATIONAL AIRPORT (DEN)

Located 220 miles (354 km) from Aspen and Snowmass Village. Over 400 daily flights are offered into Denver from over 80 cities on 18 airlines, including international nonstops from London/Heathrow (British Airways), Frankfurt (Lufthansa) and Reykjavik (Icelandair). Nonstop service from Tokyo Narita. All schedules are subject to change.



### GRAND JUNCTION REGIONAL AIRPORT (GJT)

Located 130 miles (209 km) from Aspen and Snowmass Village. Frequent connecting flights from various US cities and nonstop flights from Las Vegas and Los Angeles, Denver, Salt Lake City, Phoenix, Dallas/Ft. Worth and Houston. All schedules are subject to change.

### COLORADO MOUNTAIN EXPRESS

Colorado Mountain Express provides courteous, reliable shared ride shuttles and private charter services from Denver International, Aspen and Eagle County/Vail airports to Aspen and Snowmass Village. CME's fleet of vehicles includes 10 passenger vans, five-passenger four-wheel drive SUVs and 12 passenger Mercedes Benz Sprinter vans, all with complimentary wi-fi. Kids 12 and under ride half price, and adult parties of 3 or more are eligible for discounts on CME's door-to-door shuttle service. For personalized travel services, choose CME Premier. Privately chauffeured four-wheel drive SUVs offer the ultimate in comfort, convenience and professionalism.





## ARTS, CULTURE & ALPINE ALTERNATIVES

### NIGHT AND DAY

The fun doesn't stop when the lifts close. And during the day, the fun isn't contained to just the slopes. All around Aspen Snowmass, you'll find many activities and events to complete your winter vacation.

#### By Night:

**Enjoy Aspen's legendary après ski scene.** Hotspots include: Ajax Tavern, Chair 9, and Limelight Lounge in Aspen, Venga Venga and Base Camp Bar and Grill in Snowmass.

**Get your groove on at a concert.** Throughout winter, an impressive roster of musicians come to town to fire up the night. Check out the Bud Light Hi-Fi Concert Series as well as the famous Wheeler Opera House and Belly Up Aspen.

**Foodies around the world know:** Aspen has a top-flight dining scene. Elevated sushi, rustic French, authentic Italian? Take your pick. You cannot go wrong in this town.

**Snowcat Dinner Rides:** Go dashing through the snow in a two-ton snowcat, and enjoy an unforgettable on-mountain dinner at either Lynn Britt Cabin or Cloud Nine Alpine Bistro.



#### By Day:

**Unwind and detox** at one of Aspen's or Snowmass's day spas. Of particular note: The Remède Spa at the St. Regis, The Spa at Viceroy Snowmass and the Auberge Spa at Hotel Jerome.

**Explore the Aspen Art Museum's** acclaimed collection of art in their brand new modernist building located two blocks from the base of Aspen Mountain.

**Take a snowshoe tour** at Snowmass or Aspen Mountain with the Aspen Center for Environmental Studies, and learn about our unique alpine ecology.



## MAKING MEMORIES 5 FAMILY VACATION HIGHLIGHTS

**Ullr Nights** – Things kids love: the outdoors, tubing, Viking ships, s'mores, a bonfire to stay warm, staying up late. What is Ullr Nights at Snowmass' Elk Camp? All of the above!

**Kid-oriented trails and terrain** – Skiing that feels like play, and trails that feel more like an adventure than just another run: that's the essence of our kid-friendly terrain at Snowmass and Buttermilk.

**Treehouse Kids' Adventure Center** – At the base of Snowmass, the Treehouse brings the great outdoors inside for younger children, with Colorado-themed play rooms, hands-on exploration, and childcare for ages 8 weeks to 4 years.

**The Hideout** – New this season, The Hideout gives families a new option for childcare and a Buttermilk base for kid-friendly ski instruction. The innovative 7,500-square-foot children's center has been designed to foster a child's imagination and invite them into a world of mountain adventure and discovery.

**Snow Tubing** – New this season, the four lift-served tubing lanes at Snowmass are sure to provide ample excitement. Grab a tube and start sliding!

NEW!

NEW!



**KNOW THE CODE**

Safety on the mountain is an important part of enjoying your trip. Know the skier's/rider's responsibility code, and remember, you're responsible. Ski/ride with care!



# SNOWMASS

Snowmass has long been rated one of the best family ski areas in North America because of its wide-open, groomed cruising and family-friendly activities. Don't miss dash-through-the-woods fun for kids on the winding Prospector's Trail off Adams Avenue or the brand new four lane tubing area at Elk Camp Meadows.

Seeking adventurous terrain with a backcountry feel? Check out the double-black glades of Hanging Valley Wall and the Cirque for excitement beyond measure.

- Season dates:** Nov. 27, 2014 through Apr. 12, 2015
- Base elevation:** 8,104 ft./2,473 m
- Summit elevation:** 12,510 ft./3,813 m
- Vertical rise:** 4,406 ft./1,343 m – **the most vertical in U.S.A.**
- Terrain:** 3,132 acres/1,267 hectares
- Number of trails:** 94
- Miles/km of trails:** 147 miles/237 km
- Longest run:** 5.3 miles/8.5 km
- Steepest runs:** Gowdy's and AMF – slope angle of 40 degrees
- Snowmaking:** 230 acres/93 hectares
- Lifts:** 21, including 1 eight-passenger gondola

- Uncrowded slopes:** On average 2 people per acre/ 5 people per hectare
- Parks & pipes:** 3 terrain parks – perfect for all levels of riding. Drop into the superpipe at the Snow Park Technologies-designed Snowmass Park; or practice in the quarterpipe at Makaha Park and try the easier rails to learn the basics in Lowdown Park.
- Restaurants:** 7 total – Elk Camp, Gwyn's High Alpine, Lynn Britt Cabin (lunches and snowcat dinner rides), Sam's Smokehouse, Two Creeks Café, Ullrhof and Up 4 Pizza.



**WHITE RIVER NATIONAL FOREST**  
Snowmass is located in the white river National forest and is under permit from the forest service usa



**NEW! TUBING**

TRANSIT CENTER – enjoy après before catching FREE village shuttles and Aspen-bound/return buses.



FACE OF BELL

TRAILS LEGEND

- Easiest 0%
- More Difficult 48%
- ◆ Most Difficult 26%
- ◆◆ Expert Only 26%
- ▬▬▬ Lifts: 8



Gated Terrain: Trainer's, Kaytore's, Singo Glades and Cose Dumps are areas managed on a daily basis. Gates will be opened and closed depending on snow and weather conditions. Please check status at the grooming board located near the guest service center.

**WHITE RIVER NATIONAL FOREST**  
Snowmass is located in the white river National forest and is under permit from the forest service usa



- Season dates:** November 27, 2014 – April 19, 2015
- Base elevation:** 7,945 ft./2,422 m
- Summit elevation:** 11,212 ft./3,418 m
- Vertical rise:** 3,267 ft./996 m
- Terrain:** 675 acres/273 hectares
- Number of trails:** 76
- Miles/km of trails:** 64 miles/103 km
- Longest run:** 3 miles/4.8 km
- Steepest run:** Elevator Shaft section of the Silver Queen run – slope angle of 42 degrees
- Snowmaking:** 210 acres/85 hectares
- Lifts:** 8, including 1 six-passenger gondola
- Uncrowded slopes:** On average, 3 people per acre/ 9 people per hectare
- Restaurants:** 3 total – Ajax Tavern, Bonnie's, and Sundeck.

## ASPEN MOUNTAIN

Glade skiing on the Face of Bell. Fast, top-to-bottom laps on a freshly groomed Spar Gulch. Truffle fries at Ajax Tavern. And not-so-hidden powder stashes on the backside found by snowcat-served skiing and riding with Aspen Powder Tours. That's what makes Aspen the local's mountain.

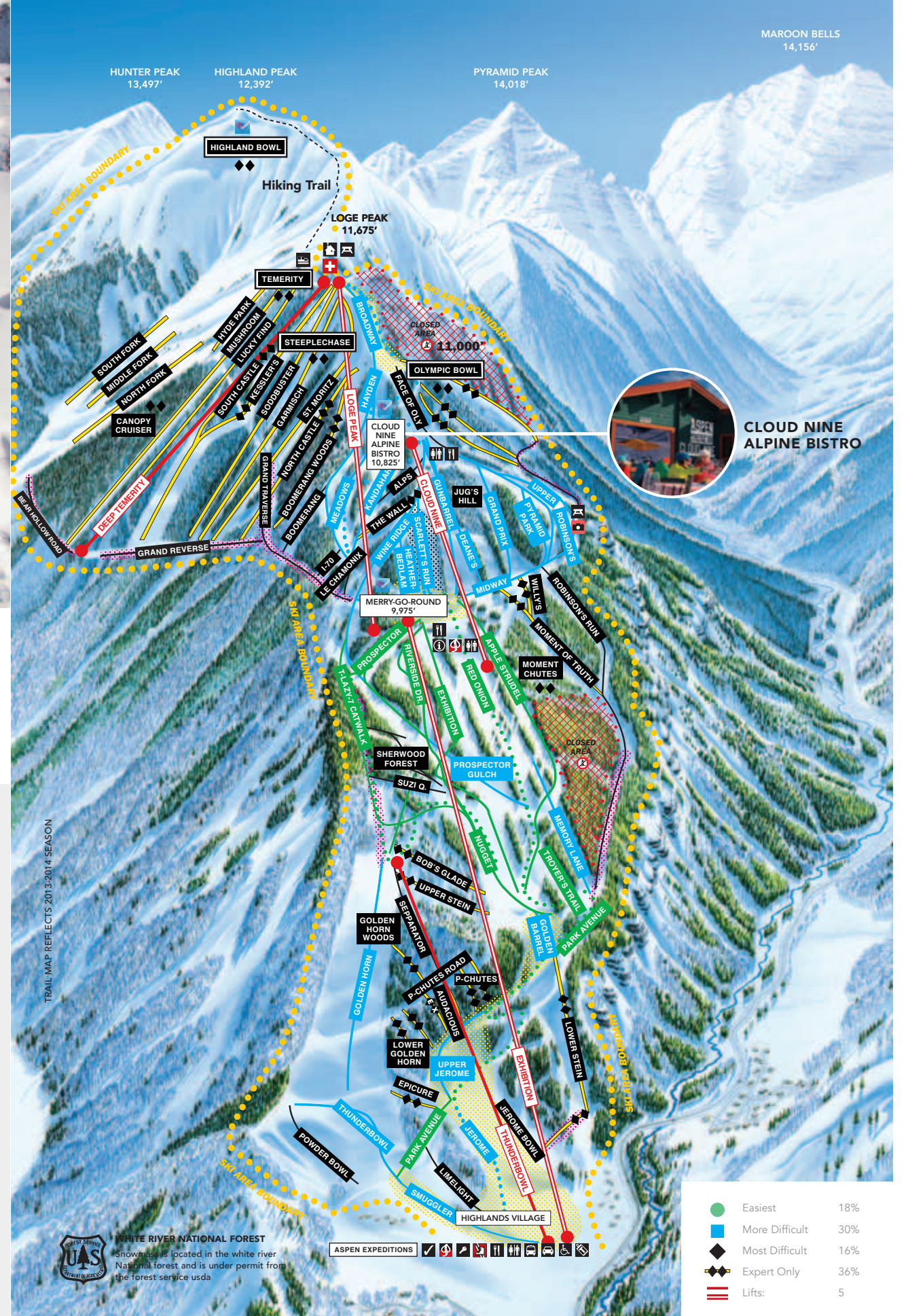


## ASPEN HIGHLANDS

Big days at Aspen Highlands always include the steep, big-mountain skiing in Highland Bowl, laps on Deep Temerity and a check for hidden powder stashes on Olympic Bowl. Top it all off with some intermediate cruisers such as Upper Robinson's and Pyramid Park off the Cloud Nine lift.



<b>Season dates:</b>	December 13, 2014 – April 12, 2015
<b>Base elevation:</b>	8,040 ft./2,451 m
<b>Summit elevation:</b>	11,675 ft./3,559 m (top of Highland Bowl 12,392 ft.)
<b>Vertical rise:</b>	3,635 ft./1,108 m
<b>Terrain:</b>	1,028 acres/416 hectares
<b>Number of trails:</b>	118
<b>Miles/km of trails:</b>	84 miles/135 km
<b>Longest run:</b>	3.5 miles/5.6 km
<b>Steepest run:</b>	Go-Go Gully, Highland Bowl (description on Highlands' Extreme Guide) – slope angle of 48 degrees
<b>Snowmaking:</b>	110 acres/44 hectares
<b>Lifts:</b>	5
<b>Uncrowded slopes:</b>	On average, 2 people per acre/ 5 people per hectare
<b>Restaurants:</b>	4 total – Cloud Nine Alpine Bistro, Highlands Alehouse, Merry-Go-Round and Willow Creek Bistro.



<span style="color: green;">●</span>	Easiest	18%
<span style="color: blue;">■</span>	More Difficult	30%
<span style="color: black;">◆</span>	Most Difficult	16%
<span style="color: black;">◆◆</span>	Expert Only	36%
<span style="color: red;">▬▬▬</span>	Lifts:	5

### TRAILS LEGEND



January 22-25, 2015  
Home of the X Games  
for the next 5 years.

<span style="color: green;">●</span>	Easiest	35%
<span style="color: blue;">■</span>	More Difficult	39%
<span style="color: black;">◆</span>	Most Difficult	26%
<span style="color: black;">◆◆</span>	Expert Only	0%
<span style="color: red;">≡</span>	Lifts:	8

TRAILS LEGEND



TRAIL MAP REFLECTS 2013-2014 SEASON



NEW! THE HIDEOUT

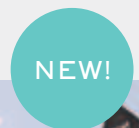
- Season dates:** December 13, 2014 – April 12, 2015
- Base elevation:** 7,870 ft./2,399 m
- Summit elevation:** 9,900 ft./3,018 m
- Vertical rise:** 2,030 ft./619 m
- Terrain:** 470 acres/190 hectares
- Number of trails:** 44
- Miles/km of trails:** 21 miles/34 km
- Longest run:** 3 miles/4.8 km
- Snowmaking:** 108 acres/44 hectares
- Lifts:** 8, 3 hi speed quads, 1 double, 4 S3 lifts
- Uncrowded slopes:** On average, 3.7 people per acre/ 8 people per hectare
- Parks & pipes:** 2 terrain parks. Buttermilk Park has over 100 features including a 22-foot superpipe and an X Games slopestyle course. For the beginner, Ski & Snowboard Schools Park (S3 Park).
- Restaurants:** 2 total – Bumps at Buttermilk Mountain Lodge and The Cliffhouse

## BUTTERMILK

Ranked #1 Overall Resort by Transworld Snowboarding

### THE HIDEOUT

Aspen Snowmass introduces The Hideout: an innovative new children's center at the base of Buttermilk. The 7,500-square-foot facility will foster the imagination of every child who visits, and seamlessly blend Buttermilk's kid-friendly terrain with a variety of fun, indoor programs centered on mountain adventure.



Artistic Rendering



# ASPEN SNOWMASS®

ASPENSNOWMASS.COM

## SPECIAL THANKS TO PHOTOGRAPHERS:

Dan Bayer, Art Burrows, Aubree Dallas, Jeremy Swanson, Zach Luchs, Scott Markewitz, Frank Shine, Hal Williams, Tom Zuccareno

Cover: Jeremy Swanson

ASPEN SNOWMASS RESORT PARTNERS  
are proud to help you bring home wonderful memories.

